

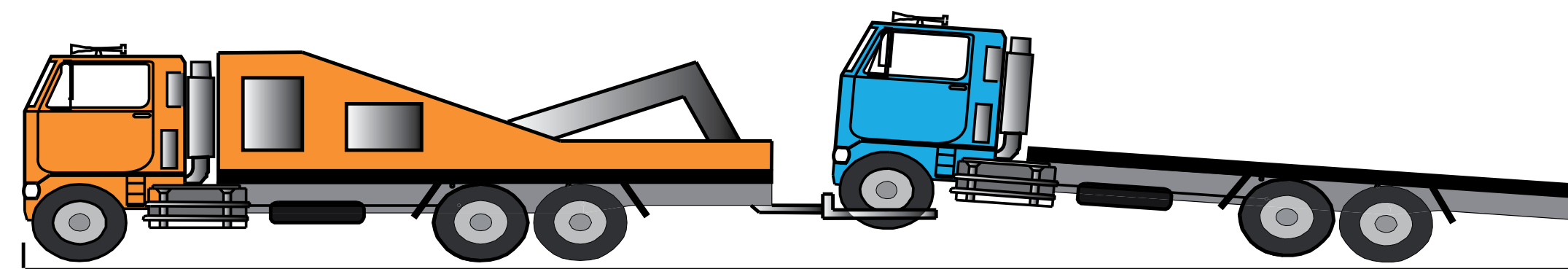
# Tow Trucks and Car Transporters

## Tow trucks requirements (towed combination)

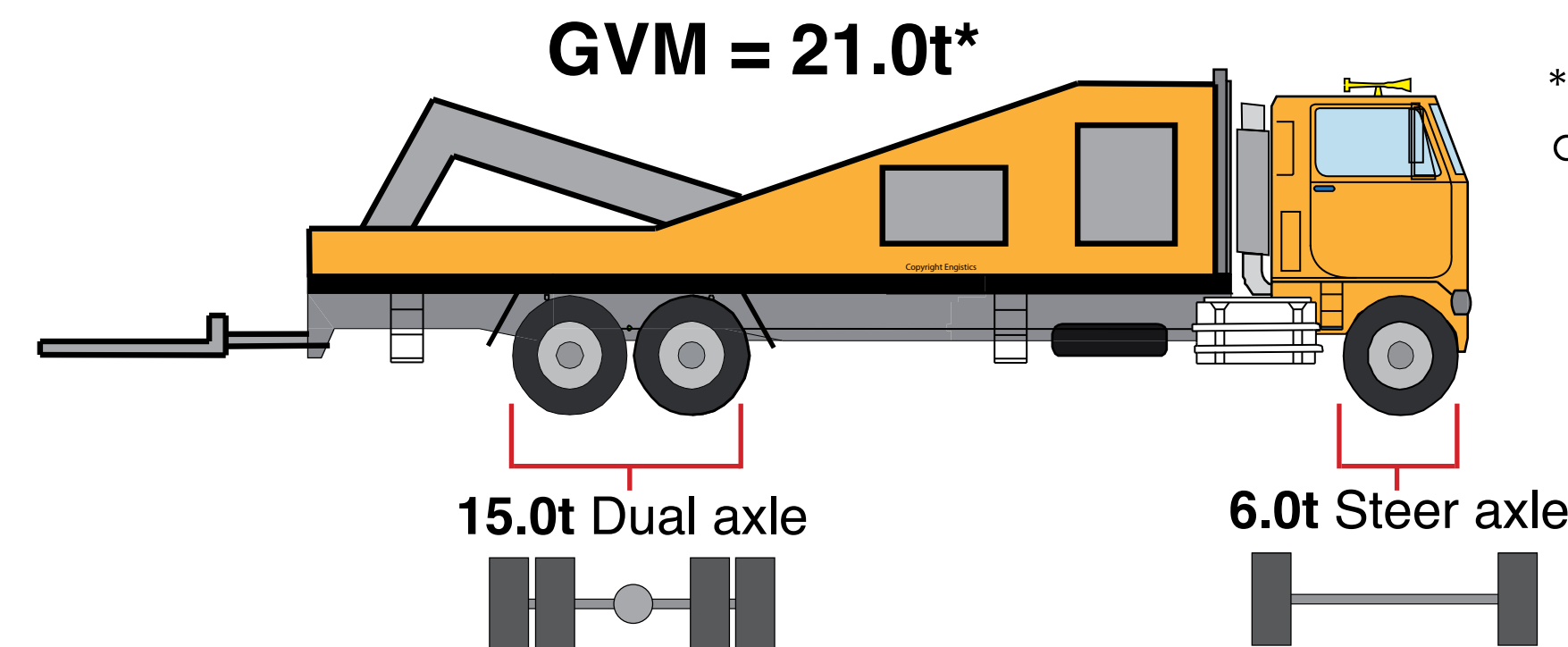
Refers to heavy vehicles with a GVM over 4.5 tonnes. Tow trucks operating as a heavy vehicle recovery service do not have to comply with the mass and dimension requirements in schedule 2 and 4.5 of the Land Transport Rule: Vehicle Dimensions and Mass 2016 and do not need to be operated under an overdimension permit when tow a heavy motor vehicle that has become disabled on a roadway to the nearest safe area.

Maximum dimensions for tow truck and towed vehicle:

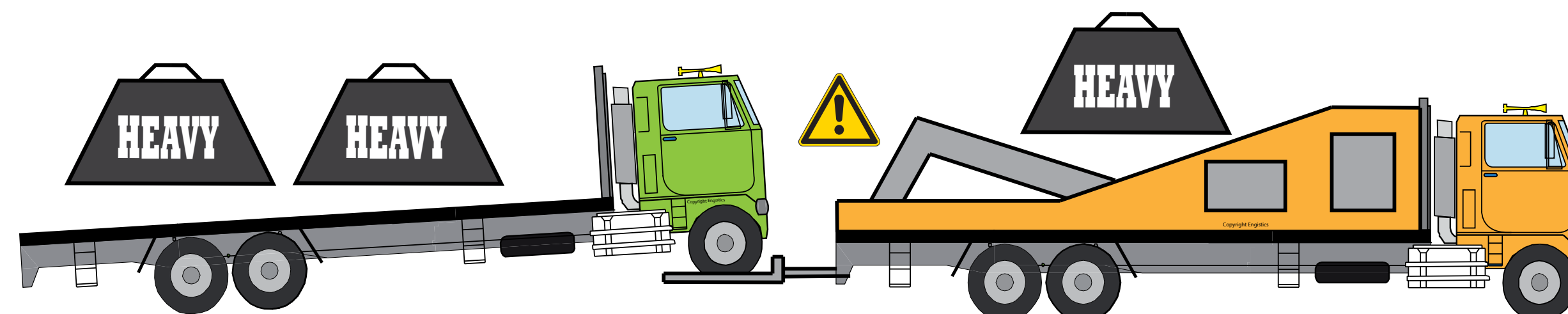
- ✓ Width – 2.55m
- ✓ Height – 4.3m
- ✓ Combination length of tow truck and towed vehicle – 11.5m
- ⚠ Tow truck and towed vehicle combinations exceeding these dimensions and not in a vehicle recovery situation will require a permit



Combination length of tow truck and towed vehicle



\*Distance between the first and last axle must be 3.6m or greater

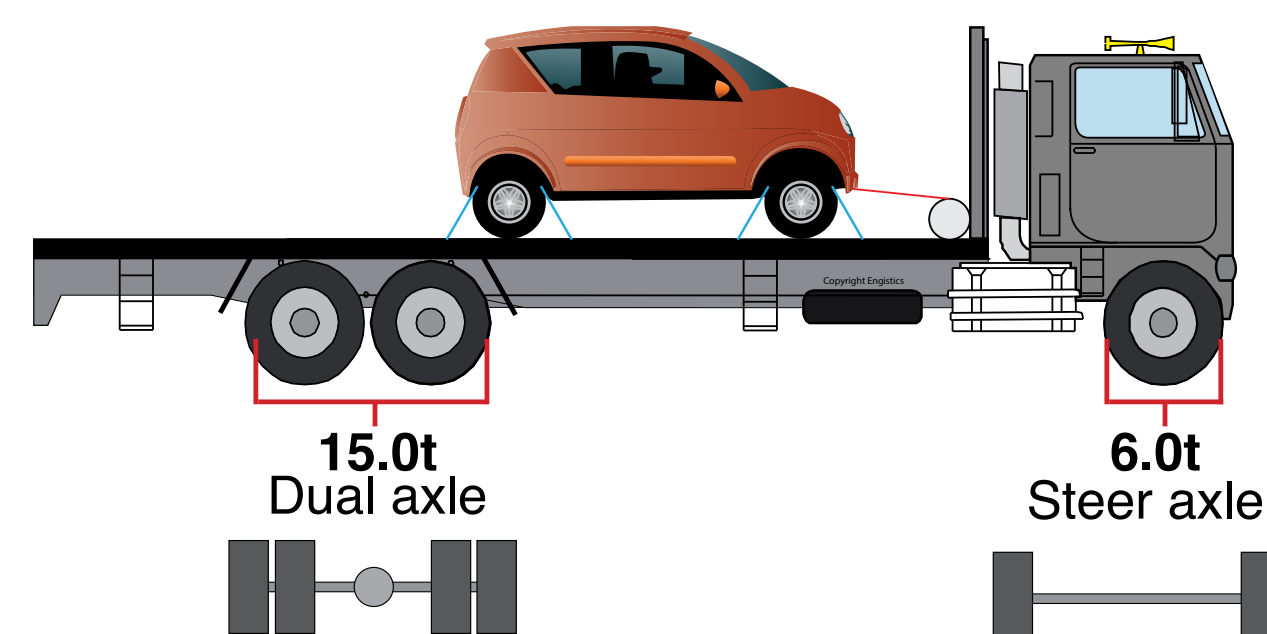


Heavy Loads could exceed the towing capacity of the vehicle

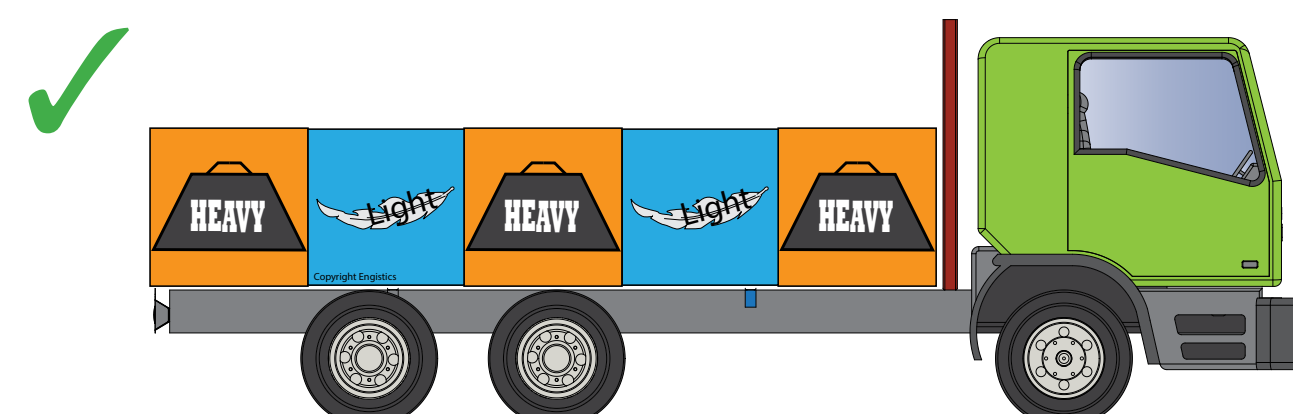
### Medium Tow Trucks:

Dual Axle: GVM = 21.0t\*

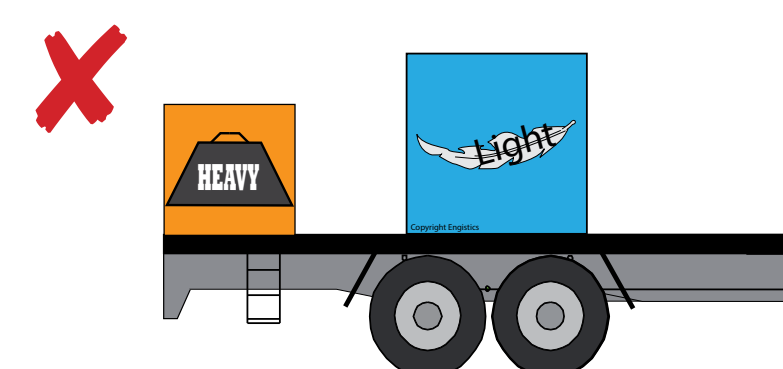
- ✓ Ensure even weight distribution where possible
- ✓ Centre heaviest item over rear axles where possible



\*Distance between the first and last axle must be 3.6m or greater



Even weight distribution



Excess weight behind axles can cause overload

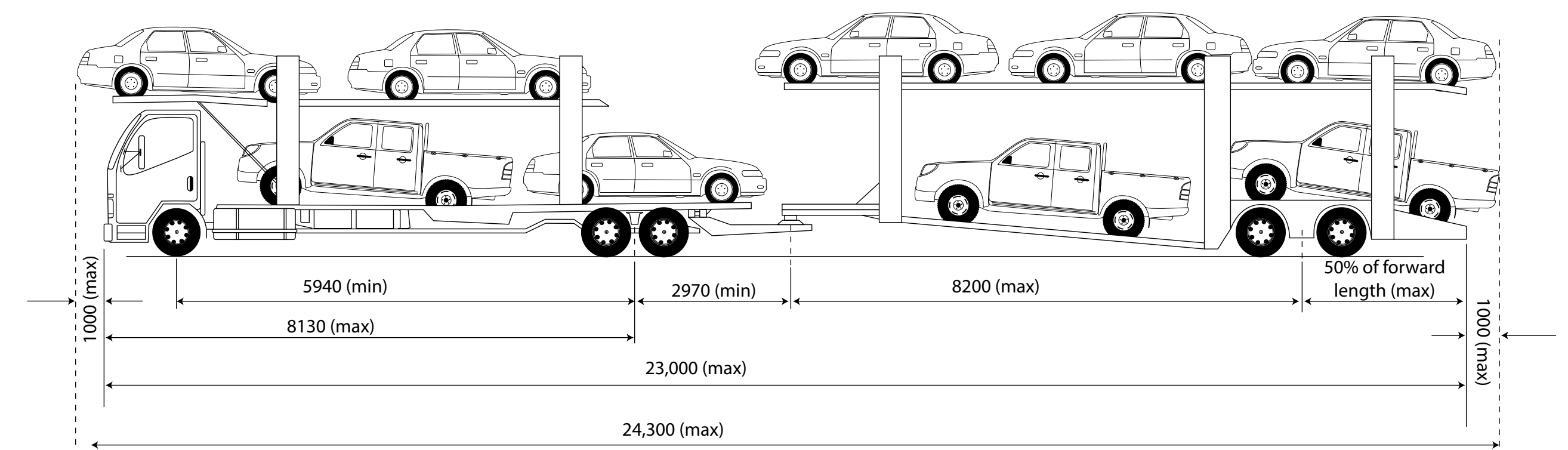
\*Axle loads are indicative of common dimensions of nominated vehicles, refer to NZ Transport Agency Factsheet 13g for more details around mass limits

Vehicle Type	Maximum standard dimension limits (including load)			
	Width (m)	Length (m)	Height (m)	Rear overhang (m)
Rigid truck (not towing a vehicle or trailer)	2.55	12.6	4.3	Lesser of 4m from rear axis or 70% of foremost axle to rear axis

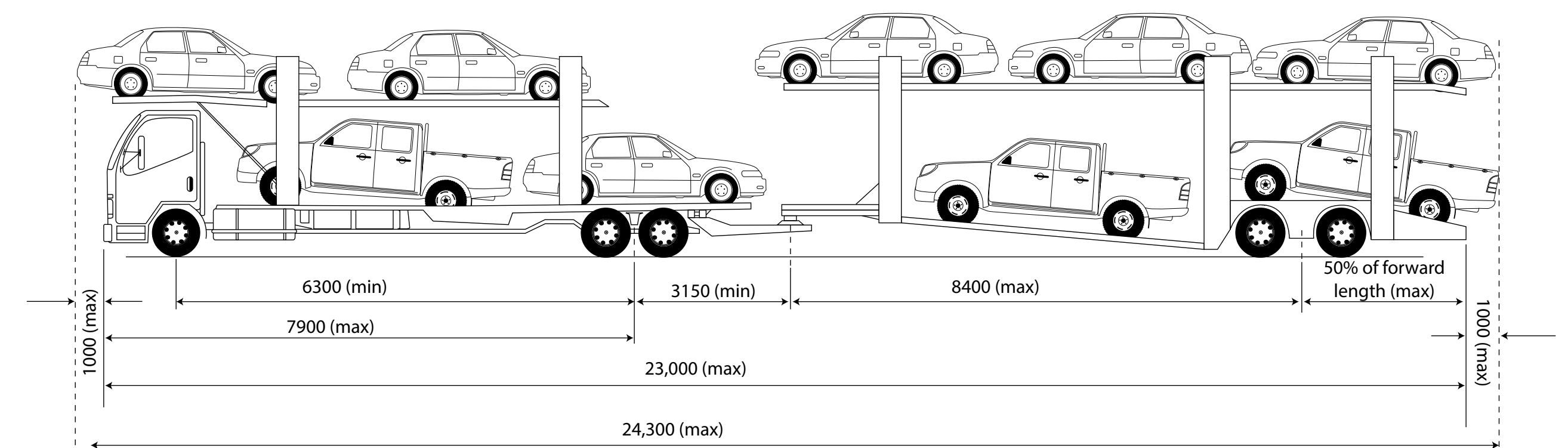
## Common car transporter requirements

- ⚠ Without a permit car transporters must meet the mass and dimension requirements in schedule 2 and 4.5 of the Land Transport Rule: Vehicle Dimensions and Mass 2016.
- ✓ Car transporters meeting the New Zealand Transport Agency approved 'proforma' design requirements can obtain a high productivity motor vehicle (HPMV) permit.

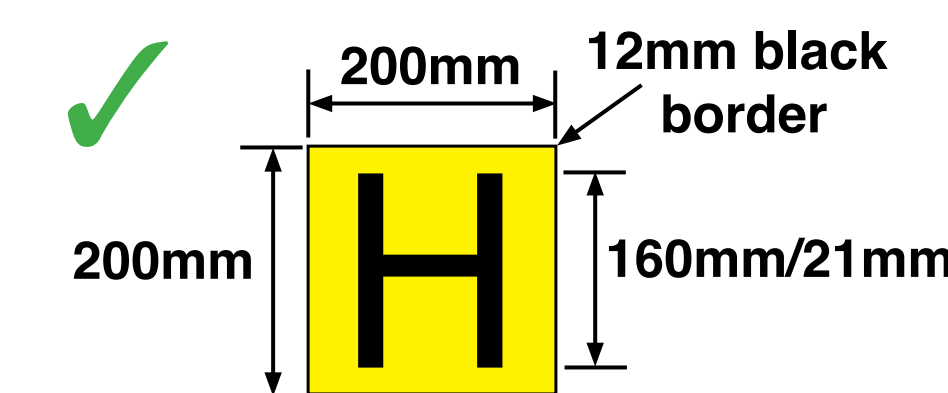
Proforma design dimension requirements (all dimensions in mm):



Note 1 Axle groups can be replaced with alternate groups at the same axis points  
Note 2 Up to 1000mm overhang is permitted front and rear but maximum width of overhang is 2000mm



Please fill in the boxes with your vehicle's dimensions  
Note 1 Axle groups can be replaced with alternate groups at the same axis points  
Note 2 Up to 1000mm overhang is permitted front and rear but maximum width of overhang is 2000mm



Car transporters operating under a HPMV permit must display retro-reflective 'H' signs at the front and rear of the vehicle combination that complies with AS/NZS 1906.1.2007

Reference:  
Land Transport Rule: Vehicle Dimensions and Mass 2016  
NZ Transport Agency Factsheets: 13a, 13g, 53a and 53b

Land Transport Act 1998